



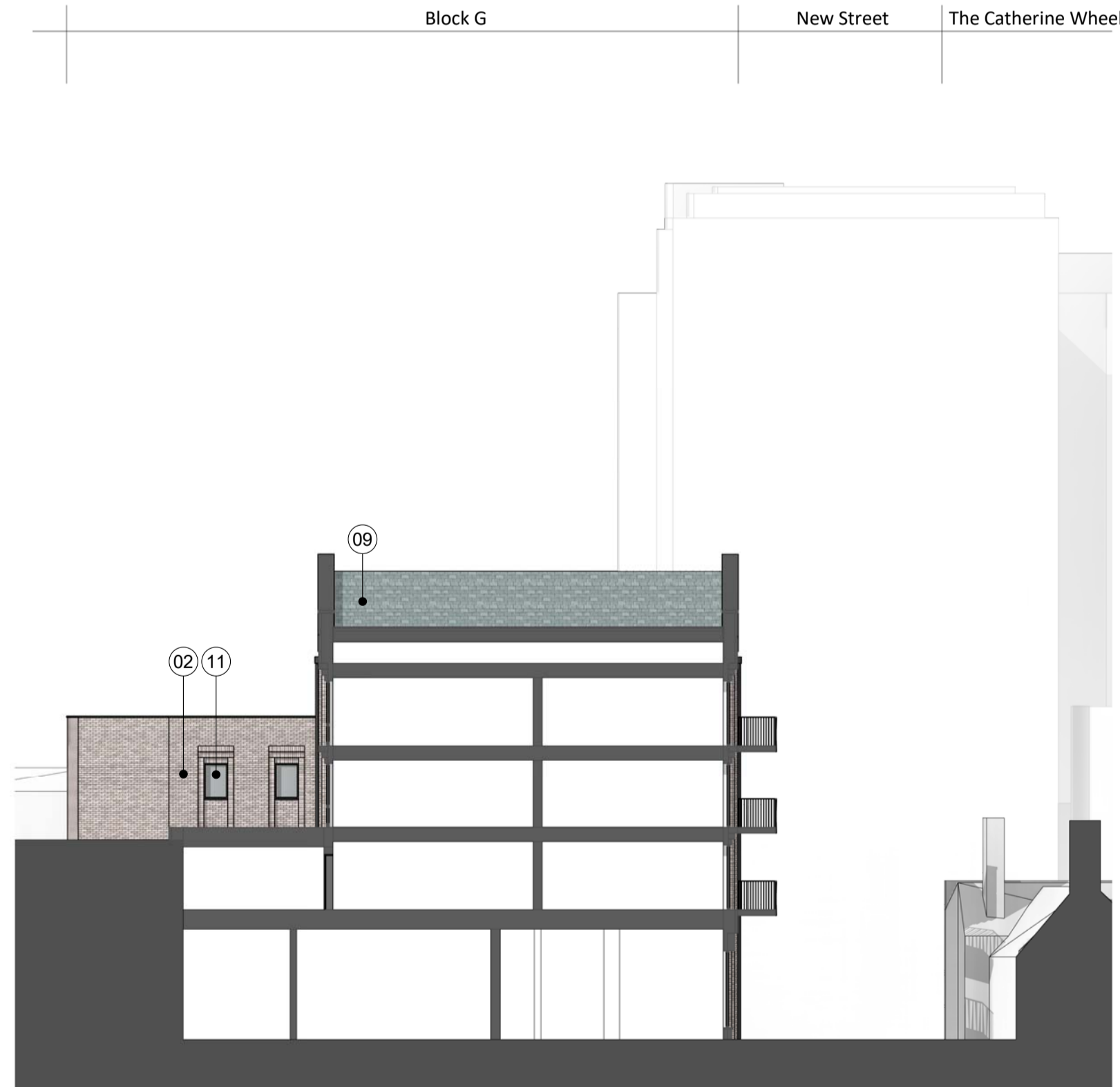
**1 Block G - South Elevation**

1 : 200



**2 Block G - North Elevation**

1 : 200



**3 Block G - West Elevation (Inner)**

1 : 200



**4 Block G - East Elevation (inner)**

1 : 200

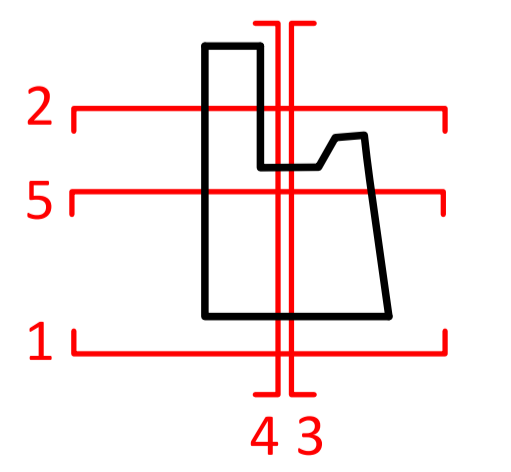


**5 Block G - North Elevation (Inner)**

1 : 200

**MATERIAL NOTES**

- 01 Brick - Beige
- 02 Brick - Light Grey
- 03 Brick - Light Red
- 04 Brick - Red
- 05 Brick - Dark Red
- 06 Brick - Blue
- 07 GRC or Similar - Light Grey
- 08 GRC or Similar - Dusty Pink
- 09 Roof Tiles
- 10 Standing Seam Metal Roof - Dark Grey
- 11 Window / Door Frame - Dark Grey
- 12 Window / Door Frame - Bronze Effect
- 13 Metal Railing / Details - Dark Grey
- 14 Metal Railing / Details - Bronze Effect
- 15 Expanded Mesh



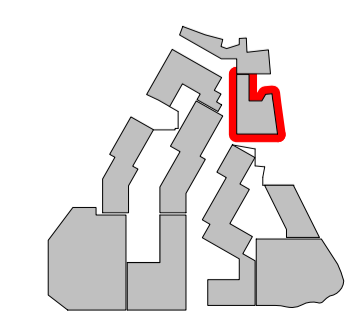
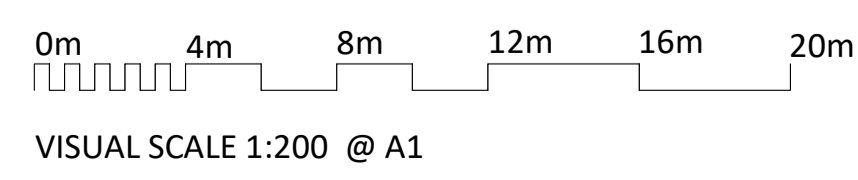
**NOTES**

CONSULTANTS  
 - Refer to highways consultant's drawings for details  
 - Refer to landscape consultant's drawings for details

AREAS  
 - Refer to area schedule

© Copyright Reserved. ColladoCollins Architects Ltd

Rev	Notes	Date	By	Auth
P1	Issued for Planning Submission	12/02/2021		
P2	Massing reduced (HE's comments)	03/08/2021		



**ColladoCollins Architects**

17-19 Foley Street  
 London W1W 6DW  
 T 020 7580 3490  
 F 020 7580 2917  
 info@colladocollins.com  
 www.colladocollins.com

Date: 29/01/2020  
 Drawn By: LK  
 Checked by: RC  
 Scale @ A1: As indicated  
 Scale @ A3: 1 : 400  
 CAD File No:

**LOCHAILORT**  
 Eagle Quarter, Newbury  
 Proposed Elevations - Block G

PLANNING  
 20011 P3-111

P2  
 Revision